



**CHAMEZA GROUP**

COMPANY PROFIL





## TABLE OF CONTENTS

01.	About Us	3
02.	Why Choose us	4
03.	Our Expertise	5-16
04.	Projects	17-23
05.	Turnkey Services	24-30
06.	Our business	31-36
07.	Case Studies	37
08.	Certification	38
09.	Our clients	39-40
10.	Branch office	41
11.	Contact Us	42



# About Our Company



We supply profitable projects in an extensive range of industries which include commercial, industrial, Laboratory, education, hospital, and residential. Chameza is an exceptionally experienced organization in the lab furniture industry and furnishings.





## Why CHOOSE US

### Vision

Our vision is to be a leader in infrastructure development, known for our commitment to quality, innovation, and sustainability. We aspire to create lasting infrastructure that enriches lives, supports economic growth, and preserves natural resources for future generations.

### Mission

Our mission is to design and build innovative infrastructure solutions that enhance communities and sustainable development. We are committed to delivering excellence in engineering and architecture while prioritizing environmental stewardship and social responsibility.

### Values

We prioritize excellence, innovation, and sustainability in infrastructure, engineering, and architecture. Upholding integrity and transparency, we forge strong relationships with clients, partners, and communities.



**Complete Survey, Testing & evaluation** Laboratory testing facility, FWD, Axle Loads.



**Feasibility, Preliminary, Detailed Project Reports**  
Best engineering practice, confirm to design standards & at least cost.



**Pre-Tender Advisory**  
Helping you with value engineering & cost cutting.



**Project Management, work Supervision, Quality checks**  
Assuring the Asset built with right quality & on time.



# OUR EXPERTISE



**ROADS AND  
HIGHWAYS**



**SEA LINKS AND  
BRIDGES**



**BUILDING AND  
STRUCTURES**



**RAILWAYS &  
AIRPORTS**



**SEA PORTS &  
TUNNELS**



**URBAN  
INFRASTRUCTURE**



**EXPORT  
MANAGEMENT**



**PROJECT  
MANAGEMENT**



## BUILDING AND STRUCTURES

Chameza Group is renowned for its expertise in constructing high-quality buildings and structures that stand as a testament to innovation, precision, and durability. With a focus on both aesthetic design and functionality, the company has delivered a wide range of projects, including residential, commercial, and industrial buildings. Each structure is carefully planned, ensuring it meets the highest standards of safety, sustainability, and performance. Chameza Group's dedication to using advanced construction techniques and top-notch materials results in buildings that not only enhance the surrounding environment but also cater to the specific needs of clients, providing long-lasting value and satisfaction.

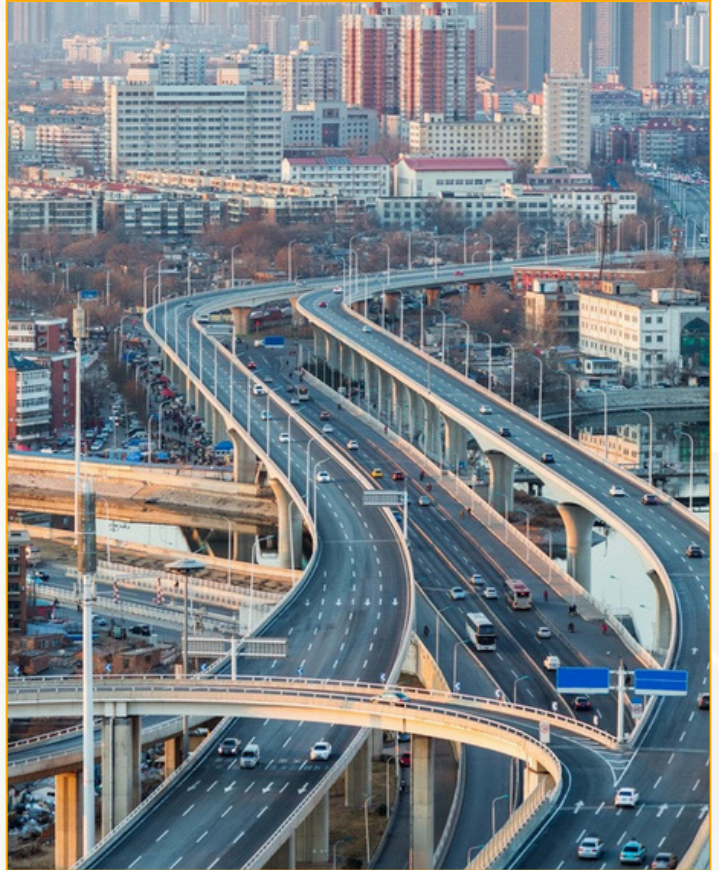
### Our Services include

- Architectural Design and Planning
- Structural Engineering
- Construction Management
- Residential Construction
- Renovation and Remodeling
- Sustainable Construction
- Turnkey Solutions
- Value engineering
- Bill of Quantities and Project Cost estimation
- Construction Supervision and Contract administration
- Pavement Maintenance Management
- Project Management and advisory services



## ROADS AND HIGHWAYS

Chameza Group is a dynamic leader in roads and highways infrastructure, offering comprehensive capabilities from construction to consultation. Our expertise spans from building durable road networks to providing tailored consultation services for projects of all scales. With a focus on innovation and collaboration, we ensure seamless project execution, driving progress and prosperity for communities. Whether constructing new highways or optimizing existing roads, we are committed to delivering sustainable solutions that enhance mobility and economic growth.



### Our Services include

- Alignment Studies
- Concept and Feasibility Studies
- Engineering studies, Surveys and Investigations
- Detailed Highway / Roadway Design
- Junction and Interchange Design
- Flyovers, underpasses and subways
- Highway Facilities Design
- Value engineering
- Bill of Quantities and Project Cost estimation
- Construction Supervision and Contract administration
- Pavement Maintenance Management
- Road Safety Audits
- Project Management and advisory services



## SEA LINKS AND BRIDGES

Constructing resilient sea links and bridges, offering comprehensive capabilities from consultation to construction. Iconic structures that redefine connectivity and inspire admiration. With a focus on innovation and precision engineering, we deliver projects that optimize marine traffic flow while minimizing environmental impact. From initial feasibility studies to meticulous planning and project management, we ensure seamless execution and timely delivery. Partner with us to navigate the waters of progress, forging new connections and unlocking opportunities for coastal communities.



### Our Services include

- Engineering studies, Surveys and Investigations
- Alignment Studies
- Concept and Feasibility Studies
- Detailed Sea links and Bridges Design
- Junction and Interchange Design
- Sea links , Over Bridges
- Highway Facilities Design
- Value engineering
- Bill of Quantities and Project Cost estimation
- Construction Supervision and Contract administration
- Project Management and advisory services
- Pavement Maintenance Management
- Road Safety Audits



## TRAFFIC & TRANSPORTATION

Chameza Group excels in delivering innovative solutions in the field of traffic and transportation, addressing the critical needs of modern infrastructure and urban mobility. With a focus on efficiency, safety, and sustainability, the company undertakes the planning, design, and execution of transportation systems that streamline the movement of people and goods. From constructing robust road networks, highways, and bridges to implementing smart traffic management systems, Chameza Group leverages advanced technologies and industry expertise to create seamless transit experiences. By prioritizing eco-friendly practices and integrating cutting-edge infrastructure, the company contributes to reducing congestion, enhancing connectivity, and supporting economic growth, making it a trusted partner in shaping smarter cities and efficient transportation ecosystems.



Four Lane Bypass



State road stretches for Two / Four lane



2-laned Outer Ring Road to 6 Lane along with Service roads

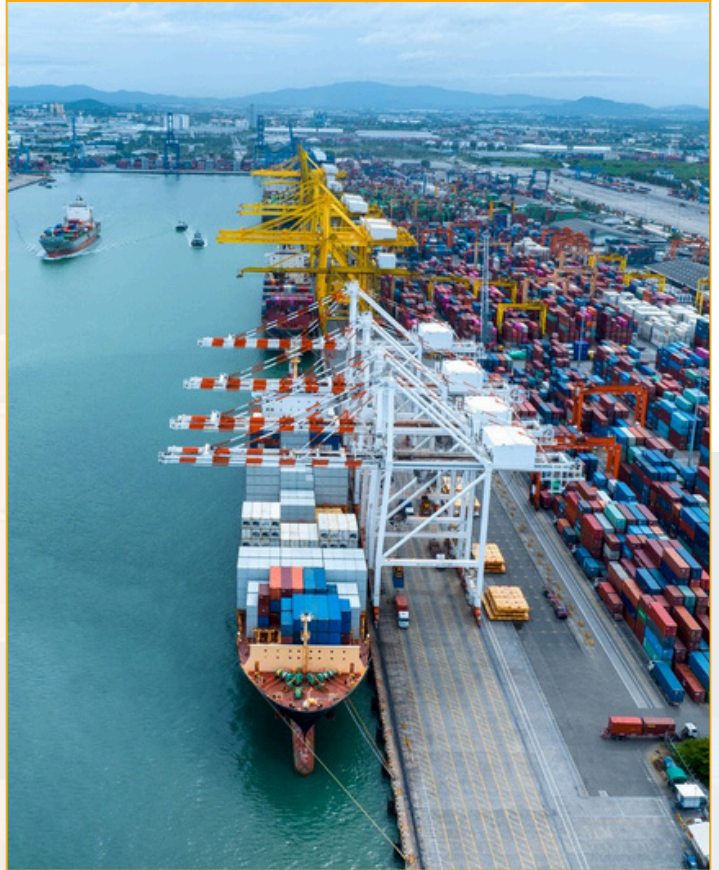


New Ring Road of 6 lanes along with Service Road



## SEA PORTS & TUNNELS

Chameza Group has established a strong reputation in the development of sea ports and tunnels, showcasing its expertise in complex and large-scale infrastructure projects. The company specializes in designing and constructing world-class sea ports that facilitate efficient cargo handling, robust logistics, and seamless maritime connectivity, contributing significantly to global trade and regional economic growth. In the domain of tunnels, Chameza Group employs cutting-edge technology and advanced engineering techniques to build resilient and safe subterranean passages for transportation, utilities, and other critical needs. Whether constructing underwater tunnels or designing access routes through challenging terrains, the company ensures precision, durability, and adherence to the highest safety standards.





## EXPORT



Chameza Group excels in Export Management by offering comprehensive solutions that streamline the process of international trade and ensure smooth operations from product sourcing to delivery. With a strong focus on logistics, compliance, and market expansion, the company supports clients in navigating the complexities of global trade. Chameza Group efficiently handles the documentation, shipping, and customs procedures, ensuring timely and cost-effective delivery of goods to international markets. By leveraging its expertise in market research, supply chain management, and strategic partnerships, the company helps businesses enhance their global presence, maximize export opportunities, and maintain competitive advantage. Chameza Group's dedication to excellence in export management makes it a trusted partner for businesses looking to expand their reach and succeed in the global marketplace.







## URBAN INFRASTRUCTURE

As more people move to towns and cities, need for living spaces is increasing. Need of the day is good living places with state-of-the-art infrastructure facilities. Quick construction, least cost and no maintenance is the need of the day but without compromising on aesthetics and quality. We provide most cost effective solutions with the use of latest technology and usage of local materials. We provide infrastructure design services for layouts, townships, SEZ's, villa projects and community living places.

Site grading / earthworks

Road hierarchy and network design

Water supply network

Sewerage network

Water tanks/reservoirs

Storm drainage

Electrical and telecommunications

Project management and Construction supervision

# PROJECT MANAGEMENT

Effective project management and construction supervision is a key aspect in completing the project successfully. Transferring designs and drawings to reality, finding solutions to field problems, construction planning, executing with high precision and completing within the stipulated time is the essence of construction supervision and project management. Chameza Project management team enables clients to focus on their core business, with the assurance that their project goals will be successfully take care. We ensure that a qualified and dedicated team of professionals is assembled to suit the specific project needs. We then provide a focal point for the client, ensuring clear communication, overall quality control and simplified project administration.

## Our Services include



- |  |                               |
|--|-------------------------------|
| ■ Cost Estimates                                       | Work Supervision ■            |
| ■ Tendering and Contract Drawings                      | Quality Control and Quality ■ |
| ■ Construction supervision and Contract Administration | Assurance                     |
| ■ Cost Control and Scheduling Contract                 | Budgetary Control ■           |
| ■ Administration                                       | Progress Reporting ■          |
|  | inspections and reporting ■   |



## **BOT/DBFO/PPP PROJECTS**



### **Value Engineering**

Value Engineering is basically application of knowledge and experience in optimizing project components design to achieve overall savings in costs and time without compromising the durability and safety. Value engineering will be undertaken on an already prepared designs and estimates to make it optimal and implementation friendly to meet the project specific demands.



### **Pre tender advisory services**

With more and more investments in roads sector are coming from private companies on PPP mode, there is need for assessing the investment viability of each project before submitting bids. We, at Chameza Group help clients by conducting quick but comprehensive filed studies and desk studies on each project and assess its viability to bid. Our services include traffic validation studies, tollable traffic estimation, engineering assessment surveys, preparation of BoQ and estimation, financial modeling and viability reports.



### **Concessionaires Engineer or owners Engineers**

Concessionaire or owners of the project in a PPP project requires design, advisory and supervision services from consultants in order to complete the project successfully. We provide re-engineering services which involve re-design of the facilities to meet the project construction requirements and to save cost and time.



## MATERIAL TESTING



Chameza group Laboratory is a well-equipped and fully functioning Material Testing Laboratory . Accreditation (Quality Management Systems ISO 9001:2015) We assist clients with more than just materials testing, often providing invaluable advice and support through a highly experienced network of staff and wealth of information that has been collected for over the years.

Chameza Group laboratory offer a full range of testing services necessary in the construction and maintenance of infrastructural assets such as bridges, roads & Highways, airfield pavement, buildings and other civil engineering works. Our team can assist you to meet your clients specifications by providing independent consultation services and NABL (National Accreditation Board for Testing and Calibration Laboratories) accredited reports to certify your quality testing. We conduct laboratory tests for the following items:

- Soil
- Aggregates
- Bitumen
- Cement
- Concrete
- Bitumen Mix Designs
- Concrete Mix Designs
- Advice on Quality Control and Quality Assurance

## ROAD CONDITION SURVEYS

At Chameza Group, we specialize in delivering comprehensive road condition surveys designed to assess the structural integrity, surface quality, and safety of road networks. Our state-of-the-art technology and experienced professionals ensure accurate data collection and analysis, providing actionable insights for maintenance and improvement plans. Whether evaluating urban streets or expansive highways, our surveys focus on identifying issues such as potholes, cracking, uneven surfaces, and drainage inefficiencies. By partnering with Chameza Group, stakeholders can enhance road durability, optimize resource allocation, and ensure safer transportation for all users.



- ◊ Traffic surveys using videography
- ◊ Rut measurements
- ◊ Subgrade testing
- ◊ Other necessary studies and investigations

- ◊ Pavement condition data collection
- ◊ Pavement composition survey
- ◊ Axle load surveys
- ◊ Deflection study using Falling weight Deflectometer (FWD)







# PROJECTS

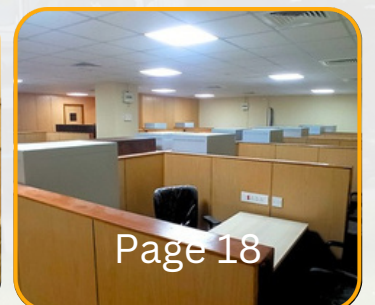
## COOPER HOSPITAL







## NAIR HOSPITAL (TOPIWALLA)







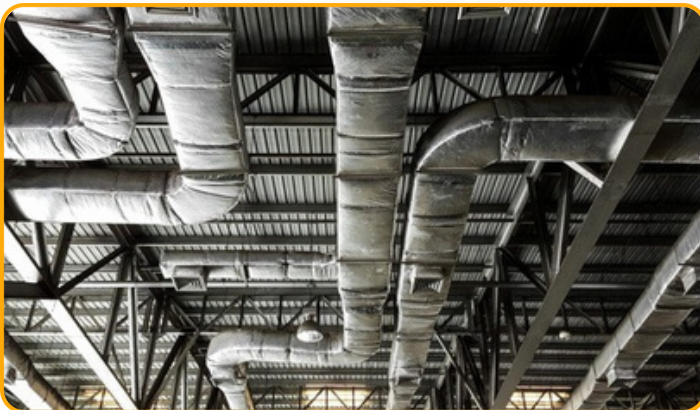
## NAIR DENTAL HOSPITAL





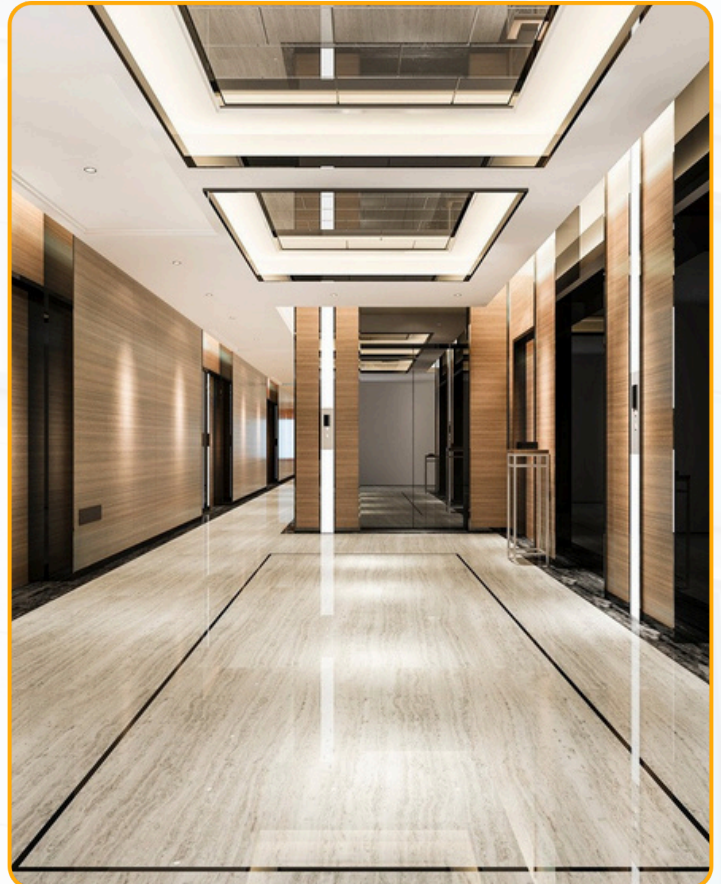


## BAIDYANATH





## HOTEL INDUSTRY







## EXPORT PROJECT FOR PATENTED TERMINAL WORKSTATION







## INDUSTRIAL SHED







## TURNKEY SERVICES



### Civil Works & Architecture Work

Chameza Group provides expert services in Civil Works and Architecture, offering innovative design and construction solutions tailored to client needs. From planning and structural development to finishing and project handover, we ensure quality, precision, and timely delivery. Our commitment to excellence makes us a trusted partner for creating functional and aesthetically pleasing spaces.

#### Scope of work :

- Flooring
- Partitions
- Civil masonry works
- Painting
- False ceiling
- Doors and windows
- Customized carpentry
- Workspace branding
- Office modular furniture







## HVAC Scope

Chameza Group specializes in HVAC (Heating, Ventilation, and Air Conditioning) solutions, catering to diverse client requirements. Our services include system design, installation, maintenance, and commissioning of energy-efficient HVAC systems. We focus on creating optimal indoor environments with advanced technology and sustainable practices, ensuring comfort, reliability, and cost-effectiveness in every project.



### Scope of work :

- AHU design and installation
- Supply and return ducts
- GI ducting for special environment
- Diffusers
- Outdoor and indoor units
- VAV systems
- Activated carbon filters



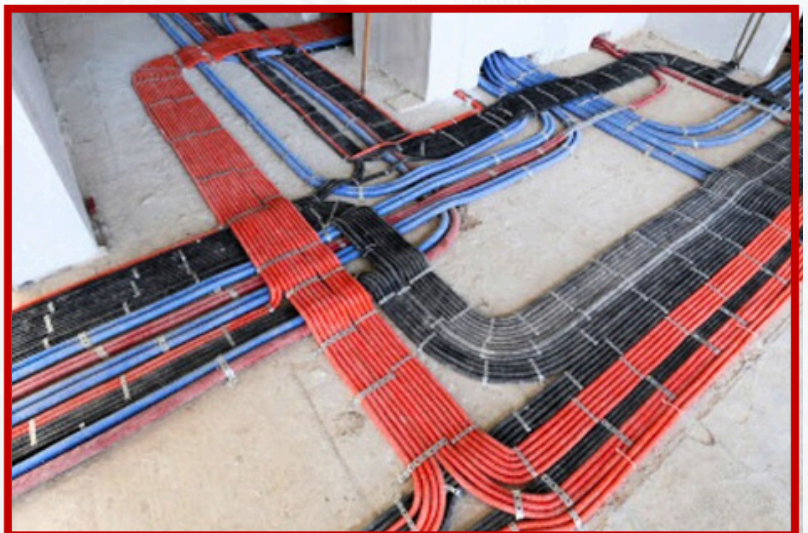


## Electrical Work

Chameza Group offers expert Electrical Work solutions, specializing in the design, installation, and maintenance of efficient and reliable electrical systems. Our services ensure safety, seamless power distribution, and uninterrupted operations for various applications, tailored to meet client requirements with precision and quality.

### Scope of work :

- UPS and main electric panel
- Miniature circuit breakers
- Distribution panel
- Power and control wiring
- Cabling
- Trunking and conducting
- Phase supply
- Industrial socket for heavy load equipment
- Data and voice service
- Lighting







## Utility Piping

TChameza Group delivers innovative Utility Piping solutions, ensuring efficient flow and distribution of essential resources like water, gas, and air. With a focus on precision engineering and durable materials, we create piping systems that optimize performance, meet industry standards, and support seamless operations across various sectors.

### Scope of work :



- Speciality gas lines like N<sub>2</sub>, H<sub>2</sub>, Ar, N<sub>2</sub>O, Acetylene, He etc.
- Miniature circuit breakers
- Industrial Steam Generator and Distribution System.
- Compressed Air Piping
- Potable Water Piping
- Nitrogen Piping Vaccum
- Piping Chilled / Hot water
- Piping Cleanroom Utility SS
- Pendants





## Fire & Alarm System (FAS)

The complete and reliable lab installation solution. No safe workplace design is complete without a communication and detection mechanism.

### Scope of work :

- Fire alarm panel and Hooter system
- Sprinklers
- Access control
- Smoke detection system
- Public address system
- CCTV and Surveillance





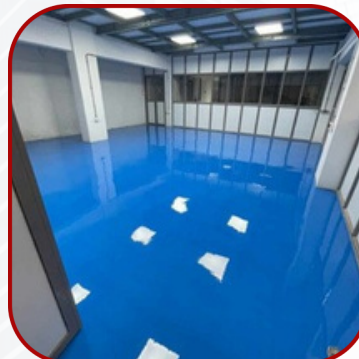


## Flooring

Chameza Group offers comprehensive flooring solutions, catering to all types of flooring needs with expertise and precision. From design and material selection to installation, we provide durable and aesthetically appealing flooring options tailored to match the functional and stylistic requirements of any space, ensuring long-lasting quality and flawless finishes.

### Types of flooring:

- Vinyl Flooring
- Carpet Flooring
- Rubber Flooring
- Laminate Flooring
- Tile Flooring
- Epoxy Flooring
- Engineered Wood Flooring
- Hardwood Flooring







## Partition

Chameza Group offers a wide range of partition solutions, providing customizable options to create functional and efficient spaces. Whether for offices, commercial, or industrial settings, our partitions are designed for flexibility, durability, and aesthetic appeal. We specialize in different types of partitions, including drywall, glass, and modular systems, to meet diverse client needs while ensuring privacy, soundproofing, and easy maintenance.

### Types of flooring:

- Glass Partitions
- Puf Partitions
- Wooden Partitions
- Aluminum Partitions
- PVC Partitions
- G.I Partitons
- Plaster slab Partitions
- Metal Lath Partitions
- Straw Board





# OUR BUSINESS



V.S.P



CHAMEZA



Arch interiors





## Vishal Steel Products

**Manufacturing : Vishal Steel Products - Quality  
Manufacturing Since 1989**



Established in 1989, Vishal Steel Products is the inaugural manufacturing brand under Chameza Group. Renowned for high-quality components, the company exceeds industry standards with precision-engineered products. From raw materials to finished goods, state-of-the-art facilities and a skilled workforce ensure impeccable craftsmanship.







## Management : Chameza Enterprises - Execution Partner within Chameza Group



Chameza Enterprises takes charge of project execution, covering all aspects from documentation to delivery. With a focus on efficiency and precision, every project is managed seamlessly, ensuring smooth workflows and timely completion. Expertise across diverse sectors enables comprehensive solutions tailored to specific project requirements. Whether handling documentation, coordinating resources, or overseeing logistics.







## Infrastructure : CG Infra - Complete Infrastructure Solutions Provider within Chameza Group



CG Infra stands as your partner for comprehensive infrastructure development, covering all aspects from consultation to construction. With a commitment to excellence, we oversee every stage of the project lifecycle, ensuring seamless execution and superior results. From planning and feasibility studies to design, procurement, construction, and project management, CG Infra handles every aspect with expertise and precision. Our dedicated team of professionals works tirelessly to meet project objectives, delivering innovative and sustainable infrastructure solutions.

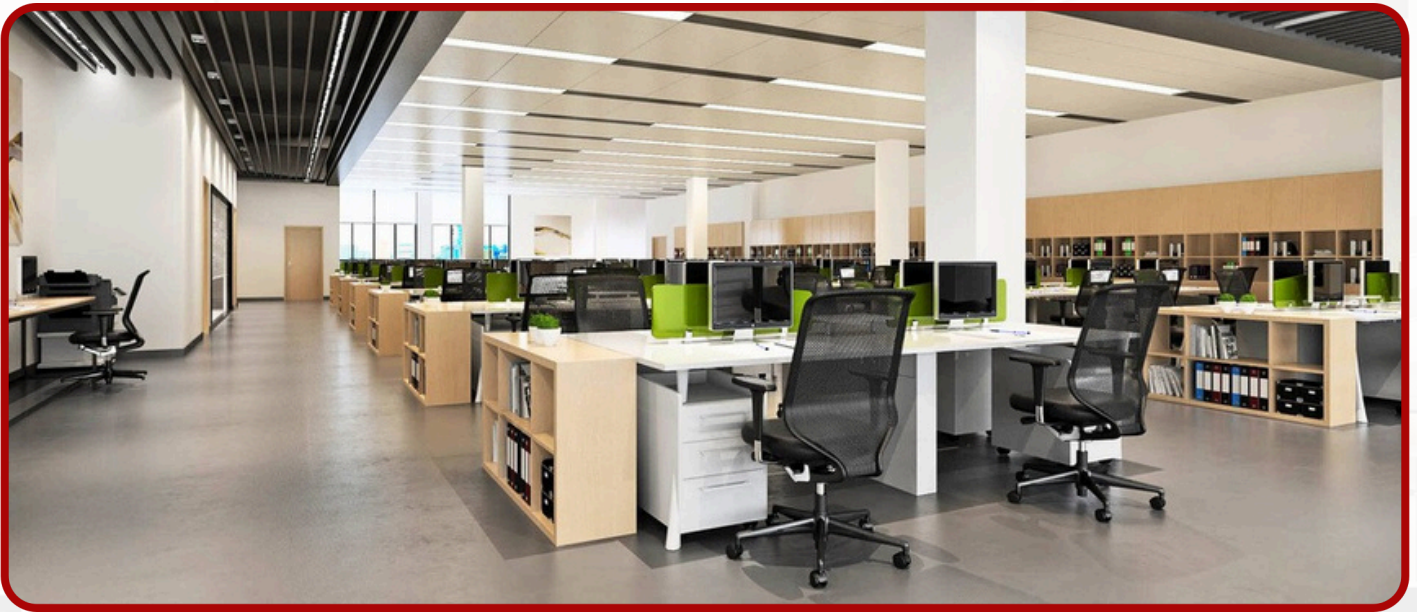






# VJ Archinteriors

**Architecture : VJ Archinteriors - Elevating Spaces  
from Design to Build**



VJ Archinteriors is your go-to destination for architectural and interior design projects, specializing in a diverse range of sectors including commercial offices, industrial spaces, healthcare facilities, educational institutions, and restaurants. From concept creation to construction, we offer comprehensive design and build services tailored to meet the unique needs of each project.







## Turnkey : LabTurnkey - Premier Laboratory Solutions Provider



LabTurnkey a brand of Chameza Group, specializes in handling all aspects of laboratory development, including design and installation of essential components. This comprehensive approach guarantees that clients receive a fully integrated and top-quality laboratory solution. By offering wide range of services under one roof, LabTurnkey ensures a seamless and efficient experience for its clients, making it a trusted choice in the laboratory industry.







## CASE STUDIES



Chameza Group has over 250 trained and experienced professionals having multi-disciplinary experience who can undertake most complex designs and complicated project implementation.

We have served more than 50 clients and completed over 150+ projects.

Chameza Group is an ISO CERTIFIED COMPANY for its Quality Management System





## CERTIFICATION



NABL ACCREDITED  
M-0042





## OUR CLIENTS







CHAMEZA GROUP

## OUR CLIENTS



**JAYANT AGRO-ORGANICS LTD.**  
*Leadership through Innovation*



**Mercedes-Benz**



SPORT UTILITY VEHICLES







## BRANCH OFFICE







# Contact Us



HO : Chameza Group Office No.104-103, Raj Swastik CHS Ltd, Daulat Nagar Road No.3, post office lane, Borivali (East) , Mumbai, Maharashtra , INDIA



Overseas Official Representative  
Shelron Enterprises  
5800 Ambler Dr #210, Mississauga,  
ON L4W 4J4, Canada



Gujarat Office :  
45, Someashwar Plaza, Ranip, Ahmedabad -  
3824800



Manufacturing Unit :  
Unit 5, Phase 1, Parmar Techno Centre, Vasai  
Phata Vasai(East) - 401208



+91 8268222200



bdh@chameza.com



www.chamezagroup.com